

This map was prepared for Assessment & Taxation purposes only and was NOT prepared nor is it suitable for legal, engineering or surveying purposes.

NW 1/4 SEC 10 T4N R28E WM UMATILLA COUNTY

4N 28 10B

Hermiston

SCALE 1" = 200'

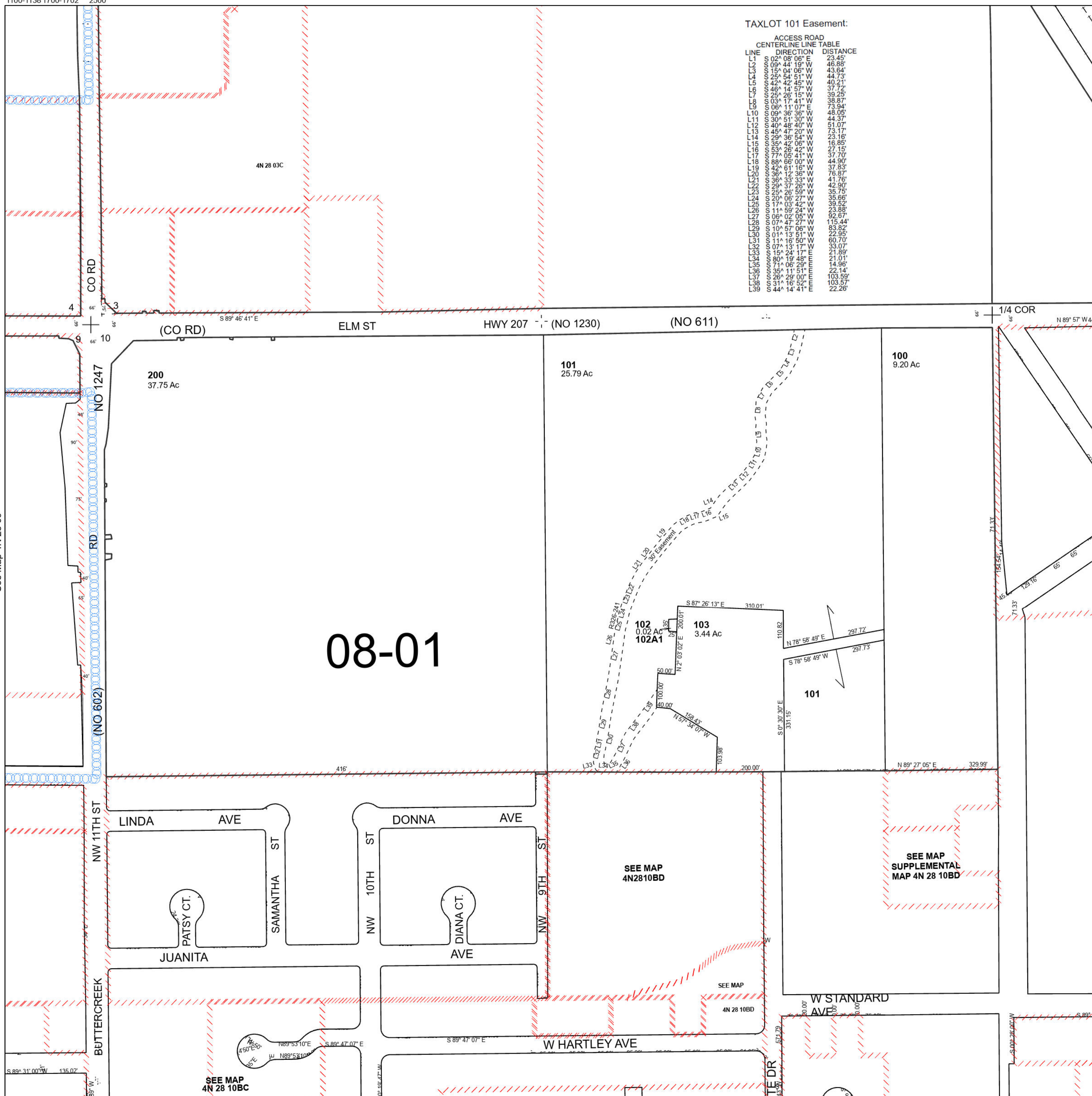
See Map 4N 28 03C

Cancelled Tax Lots

300	11239	1800	2600
400	1140-1148	1801	2700
500	1200	1900	2800
600	1201	1990	2900
601	1300-1310	2000	3000
700	1311.14	2100-2103	3100-3200
800	1500-1502	2200	3300
900	1600	2300	3400
1000	1601	2400	
1100-1138	1700-1702	2500	

TAXLOT 101 Easement:

LINE	DIRECTION	DISTANCE
L1	02° 08' 08" E	23.45'
L2	09° 44' 19" W	46.88'
L3	15° 04' 06" W	43.64'
L4	29° 54' 51" W	44.73'
L5	42° 45' W	40.21'
L6	46° 14' 57" W	37.72'
L7	25° 26' 15" W	39.25'
L8	03° 17' 41" W	38.87'
L9	08° 11' 07" E	73.94'
L10	09° 36' 36" W	48.05'
L11	30° 51' 30" W	44.37'
L12	40° 48' 40" W	51.07'
L13	45° 47' 20" W	73.17'
L14	29° 36' 54" W	23.16'
L15	35° 42' 08" W	16.85'
L16	38° 28' 42" W	27.15'
L17	77° 05' 41" W	37.70'
L18	88° 66' 00" W	44.90'
L19	42° 01' 18" W	37.83'
L20	46° 12' 36" W	76.87'
L21	36° 33' 33" W	41.76'
L22	29° 37' 26" W	42.90'
L23	25° 26' 58" W	35.75'
L24	20° 06' 27" W	35.66'
L25	17° 03' 42" W	39.52'
L26	11° 59' 24" W	23.88'
L27	06° 02' 05" W	96.67'
L28	07° 47' 27" W	115.44'
L29	10° 57' 06" W	83.82'
L30	01° 13' 51" W	22.95'
L31	11° 16' 50" W	60.70'
L32	07° 13' 17" W	33.07'
L33	15° 24' 17" W	21.89'
L34	09° 19' 46" W	21.01'
L35	71° 06' 29" W	14.96'
L36	35° 11' 51" W	22.14'
L37	26° 29' 00" W	103.59'
L38	11° 16' 52" W	103.57'
L39	44° 14' 41" E	22.26'



See Map 4N 28 09

See Map 4N 28 10AB

4N 28 10B