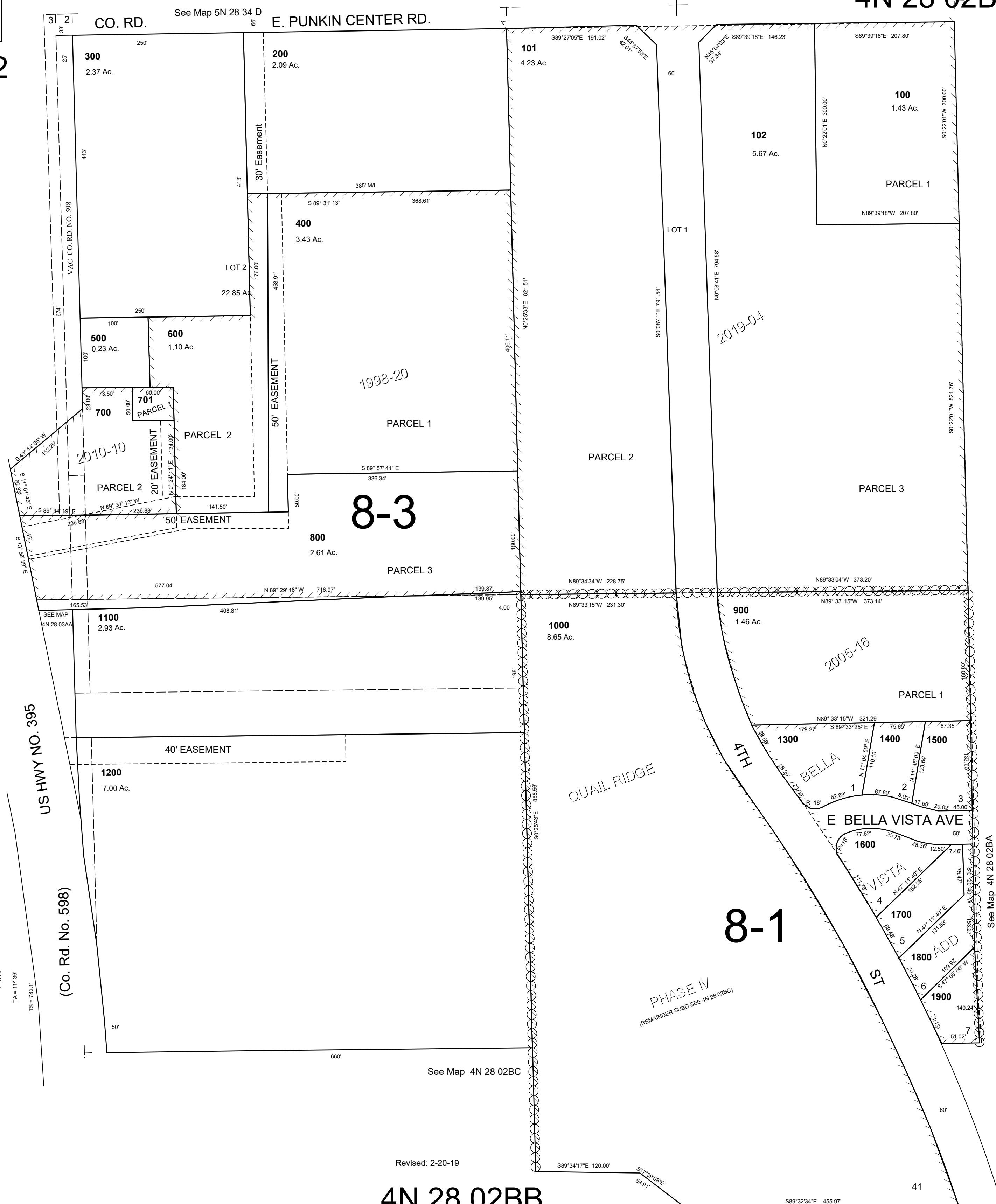


This map was prepared for Assessment & Taxation purposes only and was NOT prepared nor is it suitable for legal, engineering or surveying purposes.

4N 28 02BB

NW1/4 NW1/4 SEC 2
T4N R28E WM
UMATILLA COUNTY
SCALE 1"=100'

AERIAL PHOTO NO. 1P-122



See Map 4N 28 03AA

1"=CR
TA=114.38'
TS=782.1'

US HWY NO. 395
(Co. Rd. No. 598)

See Map 4N 28 02BC

Revised: 2-20-19

4N 28 02BB

See Map 4N 28 02BA