

This map was prepared for Assessment & Taxation purposes only and was NOT prepared nor is it suitable for legal, engineering or surveying purposes.

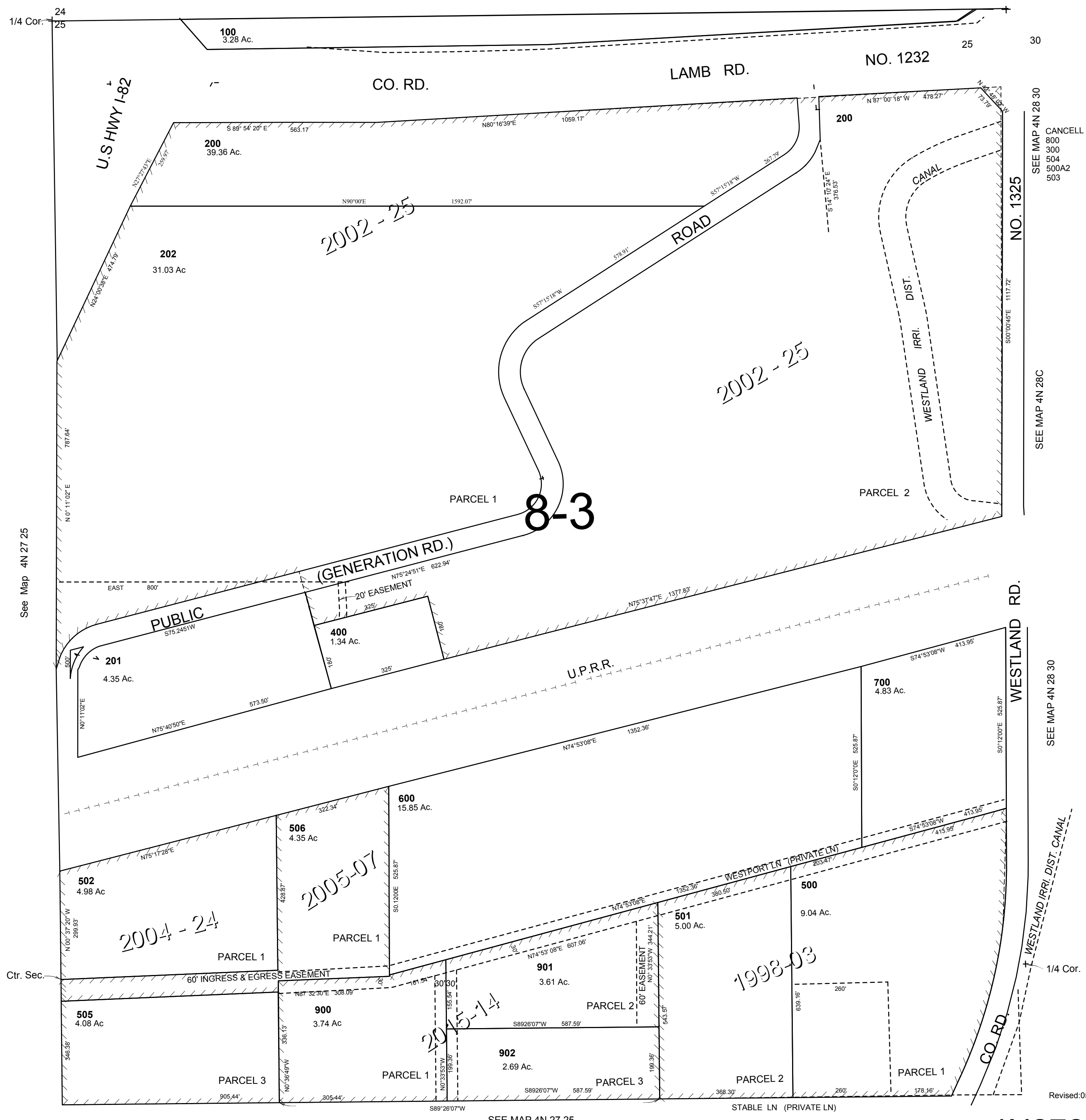
NE1/4 SEC 25 T 4N R 27E WM UMATILLA COUNTY

4N2725A

AERIAL PHOTO NO 1P 116-118
2P 27-29 & 36-38

SCALE: 1" = 200'

See Map 4N 27



SEE MAP 4N 28 30
CANCEL
800
300
504
500A2
503

SEE MAP 4N 28C

SEE MAP 4N 28 30

Revised:05-01-17

SEE MAP 4N 27 25

4N2725A