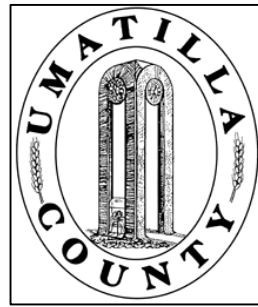


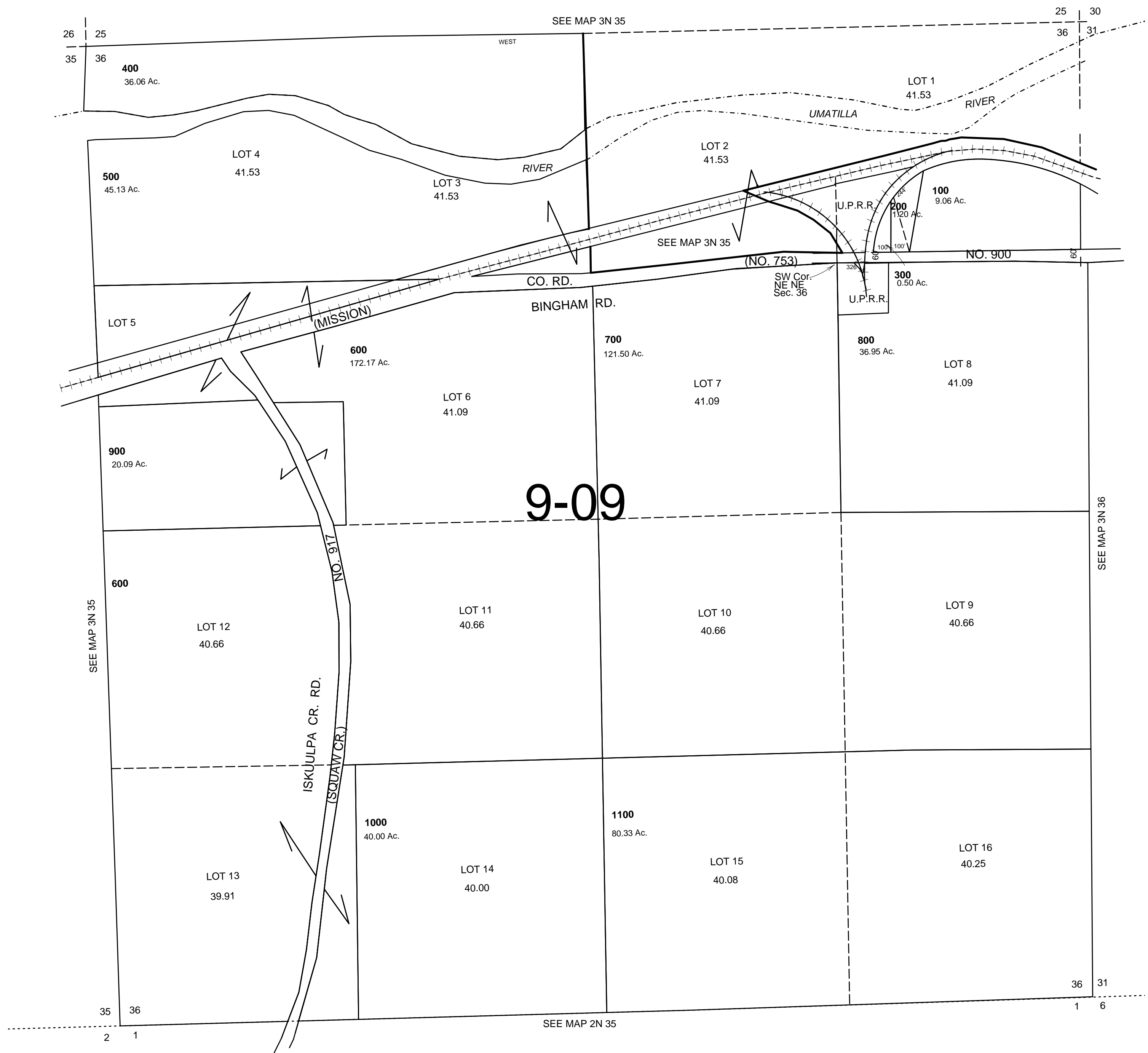
This map was prepared for Assessment & Taxation purposes only and was NOT prepared nor is it suitable for legal, engineering or surveying purposes.



SEC 36 T3N R35E WM UMATILLA COUNTY, OR

SCALE: 1" = 400'

3N 35 36
AERIAL PHOTO NO. NZ-3P 161-165 & 4P 148-153
4P 128-132



Revised: 10-23-09
3N 35 36