

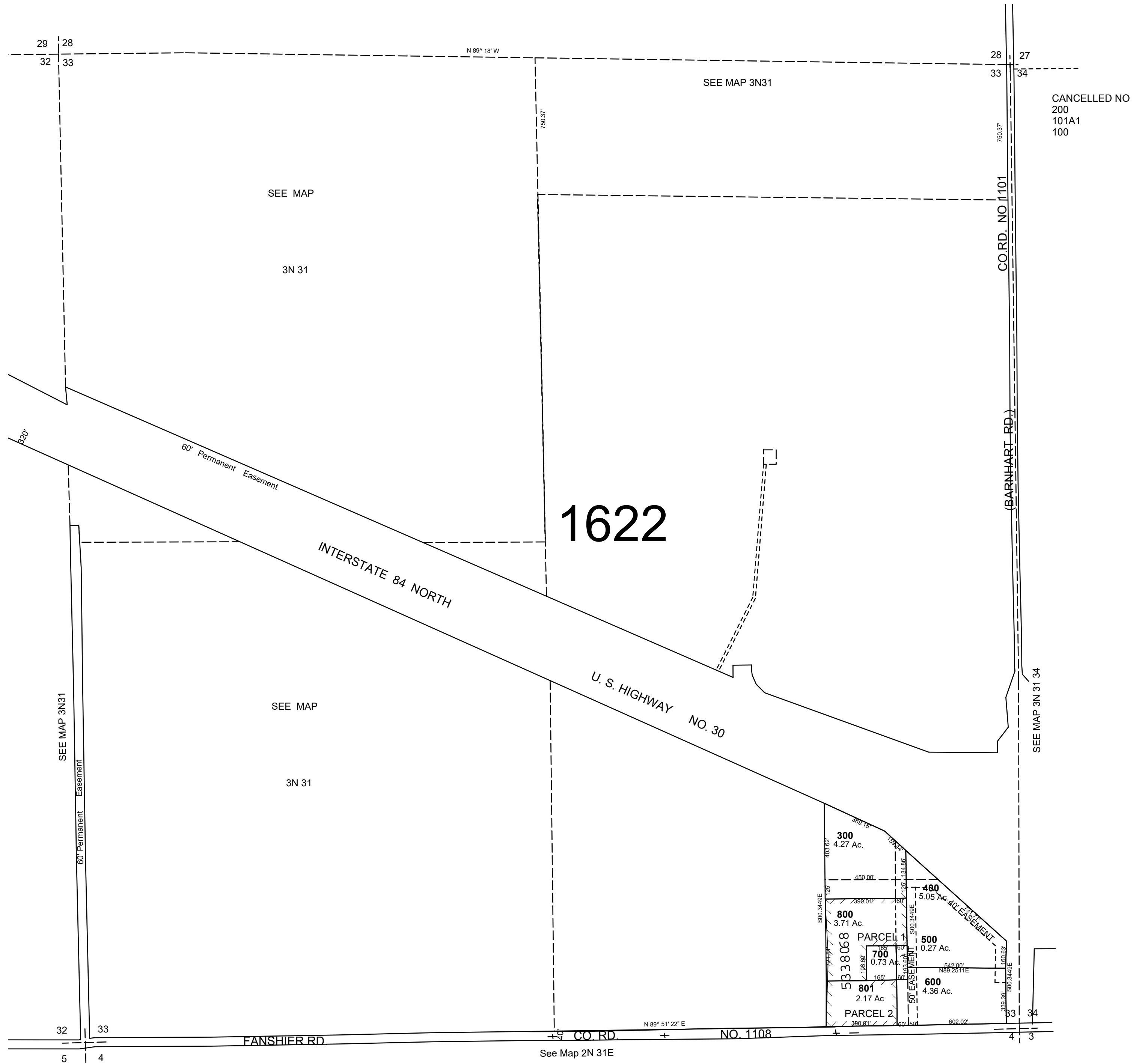
This map was prepared for Assessment & Taxation purposes only and was NOT prepared nor is it suitable for legal, engineering or surveying purposes.

SEC 33 T3N R31E WM UMATILLA COUNTY

1"=400'

3N 31 33

AERIAL PHOTO NO 2P 68-70, 72, 121-124, 132, 134 & 136



Revised: 09-13-2021
3N 31 33