

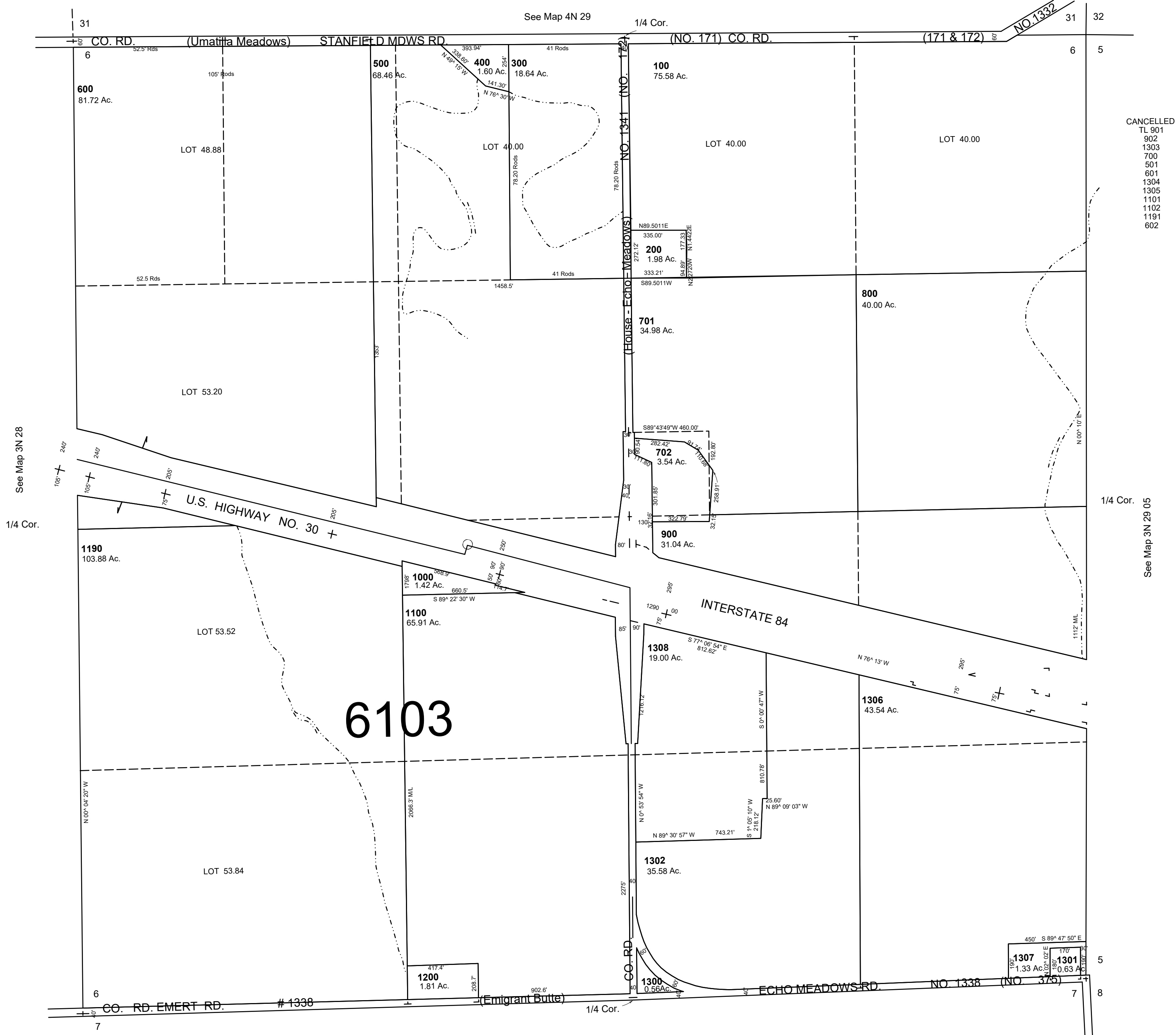
This map was prepared for Assessment and Taxation purposes only and has NOT been prepared for legal, engineering or surveying purposes.

SEC 6 T3N R29E WM UMATILLA COUNTY

3N 29 06

AERIAL PHOTO NO. NZ 2P 85 & 86

1"=400'



REVISED: 09-13-2021

3N 29 06