

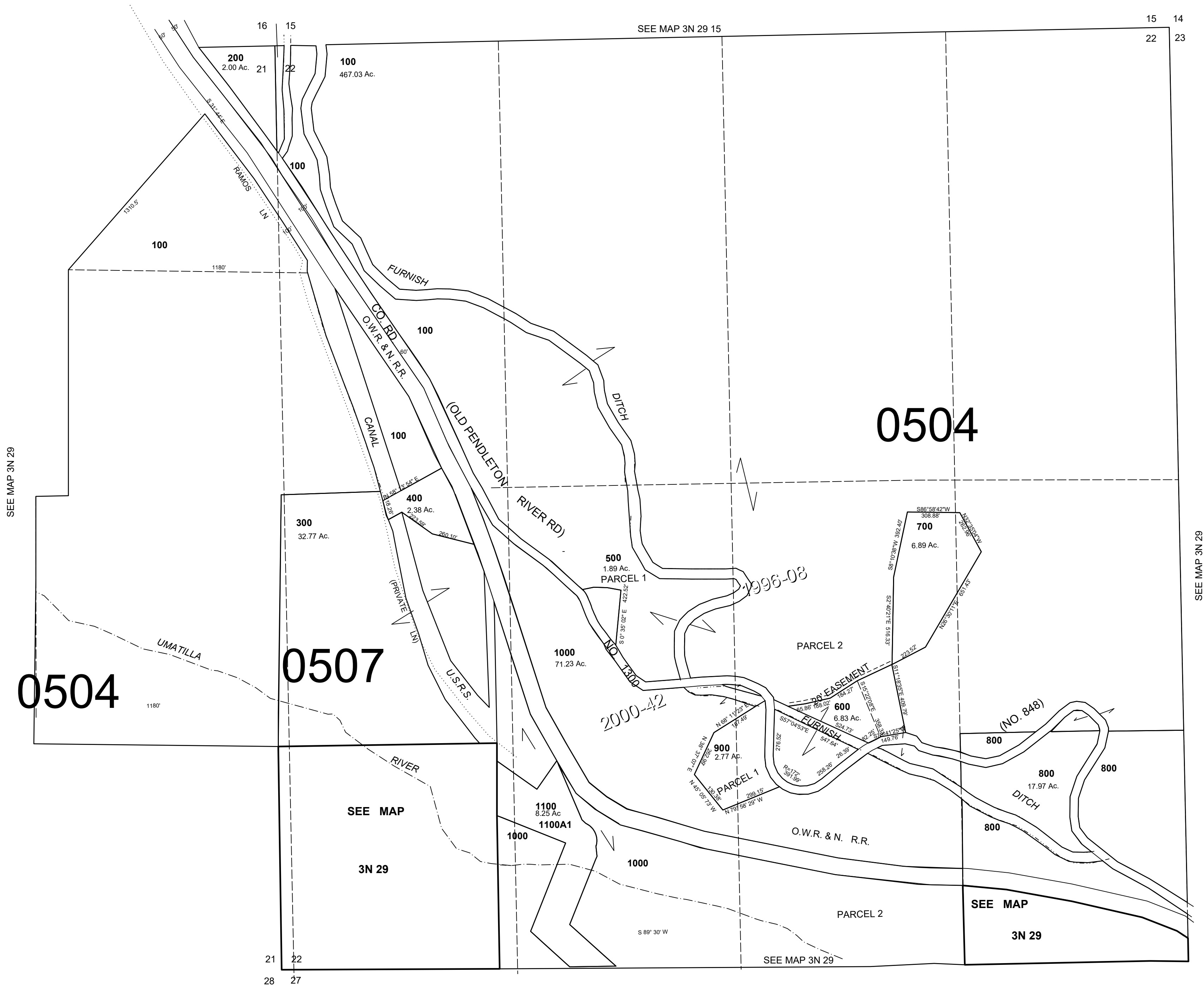
This map was prepared for Assessment & Taxation purposes only and was NOT prepared nor is it suitable for legal, engineering or surveying purposes.

SEC 22 T3N R29E WM UMATILLA COUNTY

SCALE 1"=400'

3N 29 22

AERIAL PHOTO NO. NZ 2P 80-86, 109-114 & 144-148



Revised: 06-03-2021

3N 29 22