

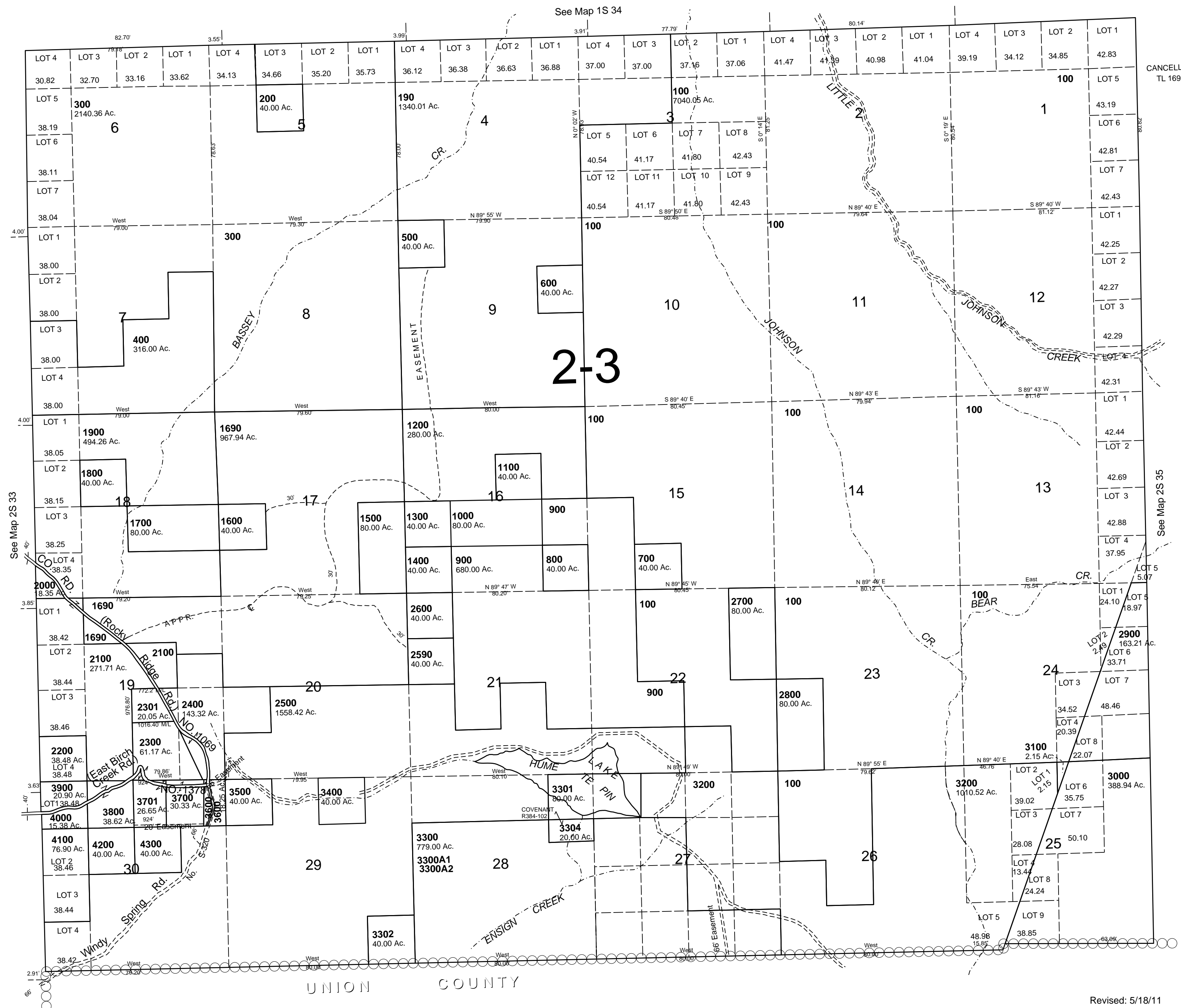
This map was prepared for Assessment & Taxation purposes only and was NOT prepared nor is it suitable for legal, engineering or surveying purposes.

T2S R34E WM UMATILLA COUNTY

2S 34

AERIAL PHOTO NO. 7P 163-164, 8P 4-10 & 77-82

SCALE 1"=2000'



Revised: 5/18/11

2S 34