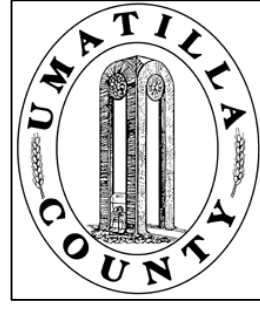


This map was prepared for Assessment purposes only.



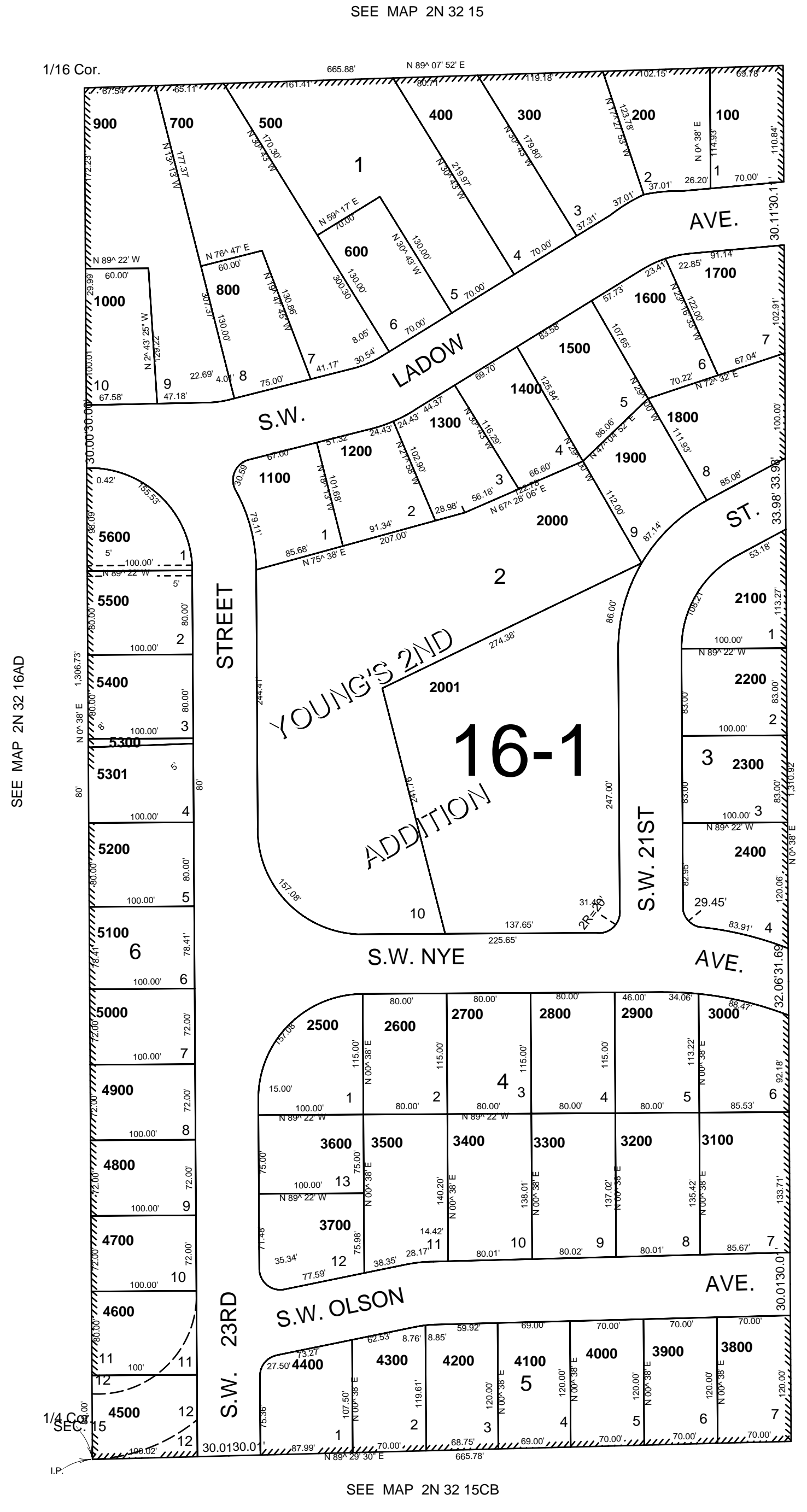
SW1/4 NW1/4 SEC 15 T 2N R 32E WM
UMATILLA COUNTY, OR

2/24/04

SCALE: 1" = 100'

2N 32 15BC

AERIAL PHOTO NO. 4P-59



CANCELLED
TL 4601
4502
4501

2N 32 15BC