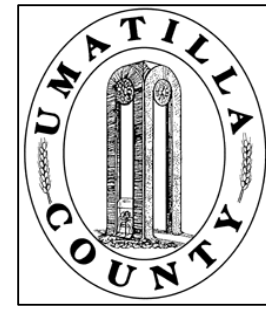


This map was prepared for Assessment & Taxation purposes only and was NOT prepared nor is it suitable for legal, engineering or surveying purposes.



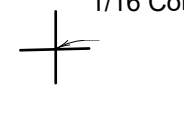
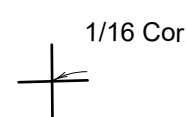
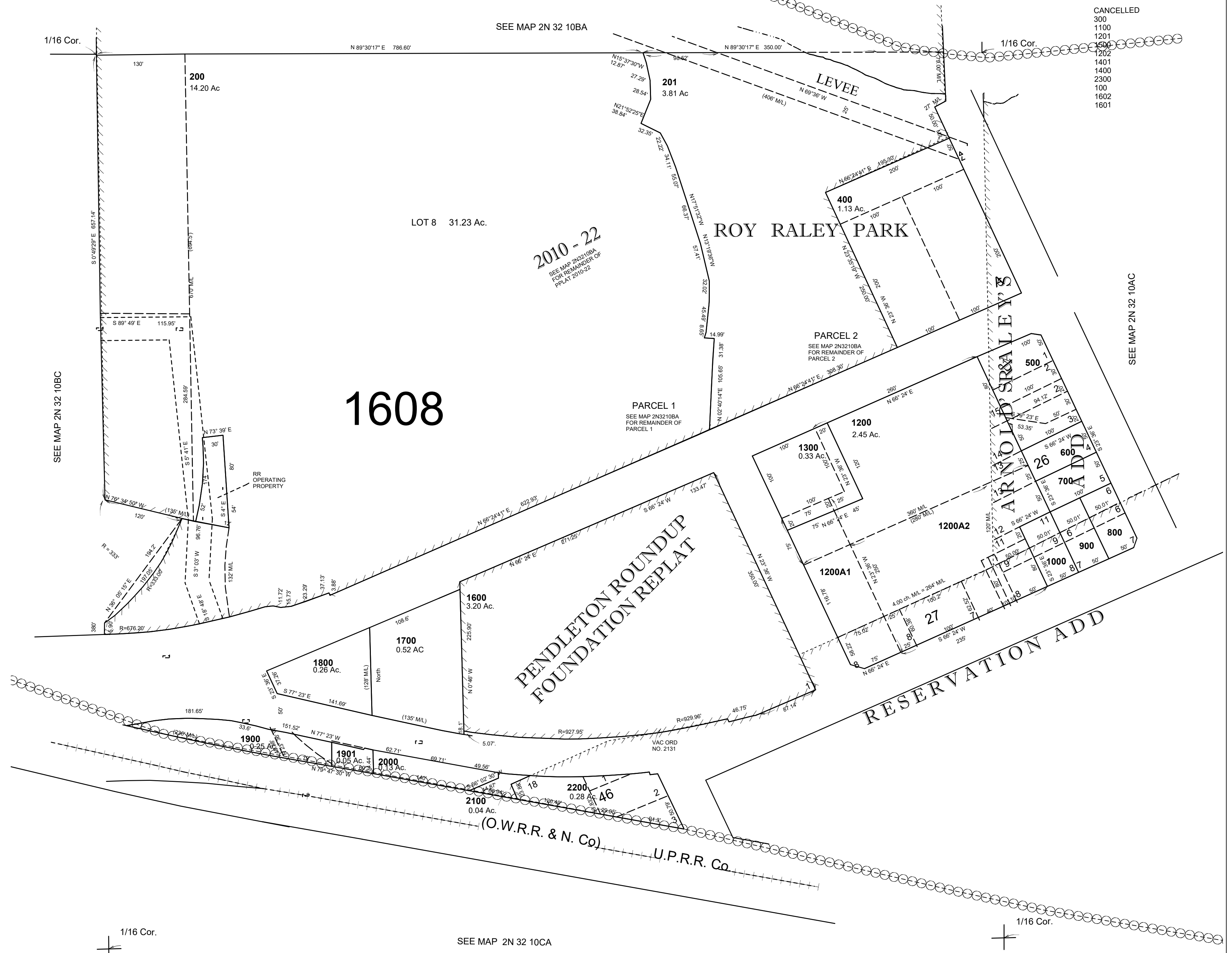
SE1/4 NW1/4 SEC 10 T2N R32E WM

2N 32 10BD

UMATILLA COUNTY

AERIAL PHOTO NO NZ-4P-103

SCALE: 1" = 100'



Revised: 09-28-2021

2N 32 10BD