

This map was prepared for assessment purposes

# NW 1/4 SW 1/4 T5NR28E WM UMATILLA COUNTY

9/19/05

## 2N 32 03BD

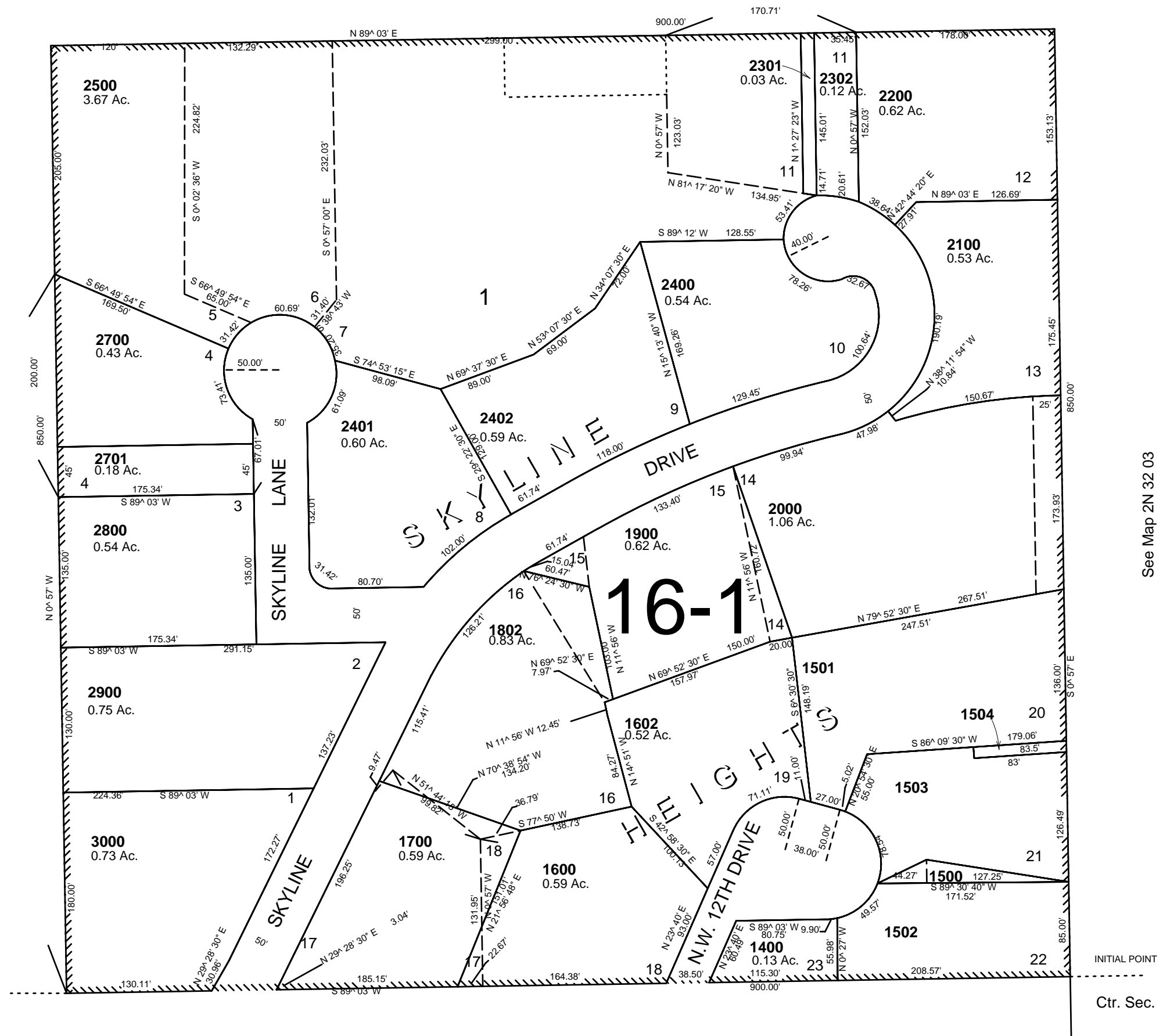
AERIAL PHOTO NO. NZ 4P-103

1"=100'

CANCELLED  
TL 100  
101  
200  
300  
301  
302  
400  
401  
500  
600  
700  
800  
900  
1000  
1100  
1200  
1300  
1601  
1701  
1702  
1801  
2001  
1800  
2300  
2600  
2601

See Map 2N 32 03

### 16-36



## 2N 32 03BD