

This map was prepared for Assessment & Taxation purposes only and was NOT prepared nor is it suitable for legal, engineering or surveying purposes.

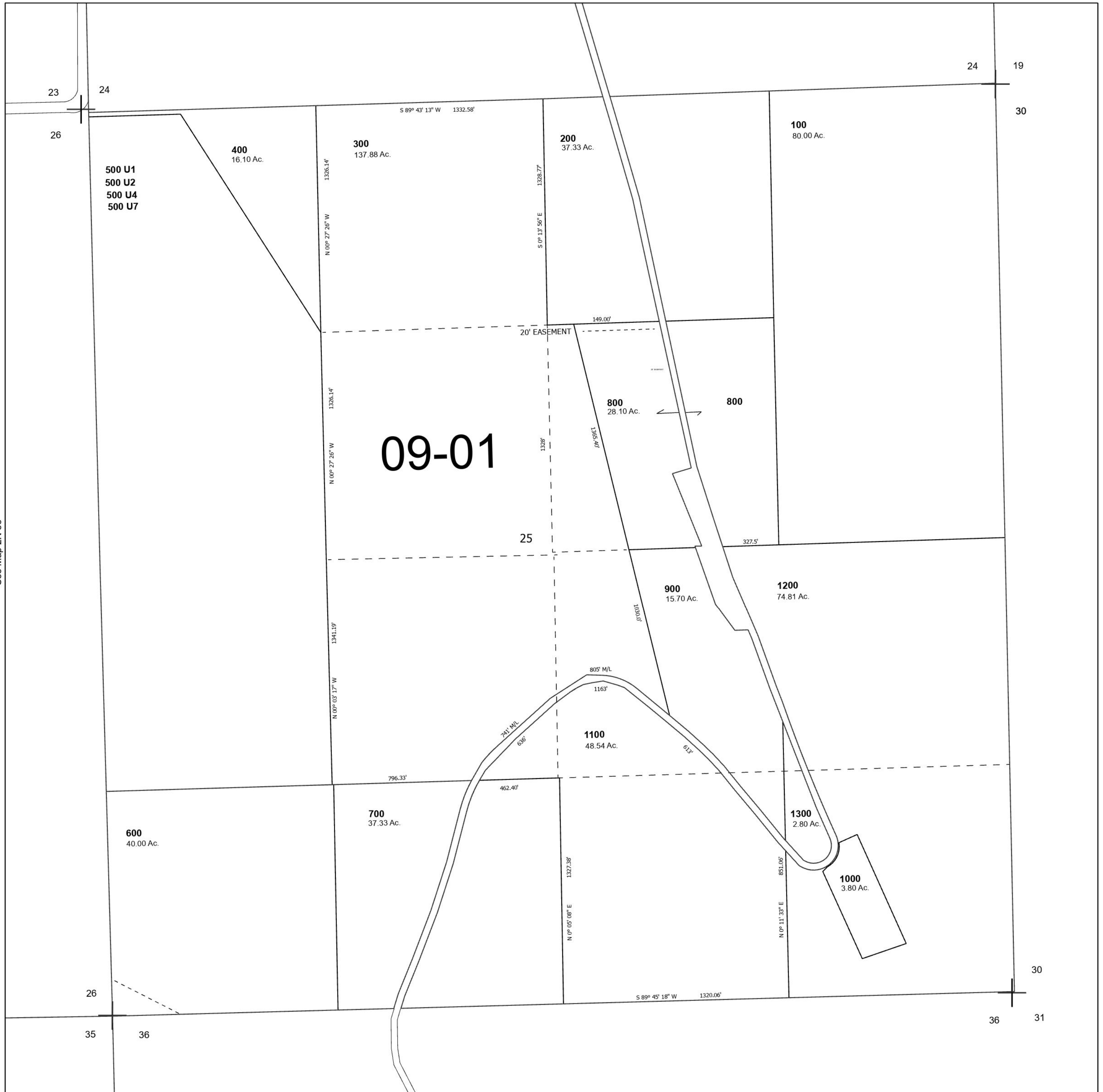
Cancelled Tax Lots

SEC 25 T2N R33E WM UMATILLA COUNTY

2N 33 25

SCALE 1" = 400'

See Map 2N 33 24



See Map 2N 33

See Map 2N 34

Revised 3/5/2024

See Map 2N 33

2N 33 25