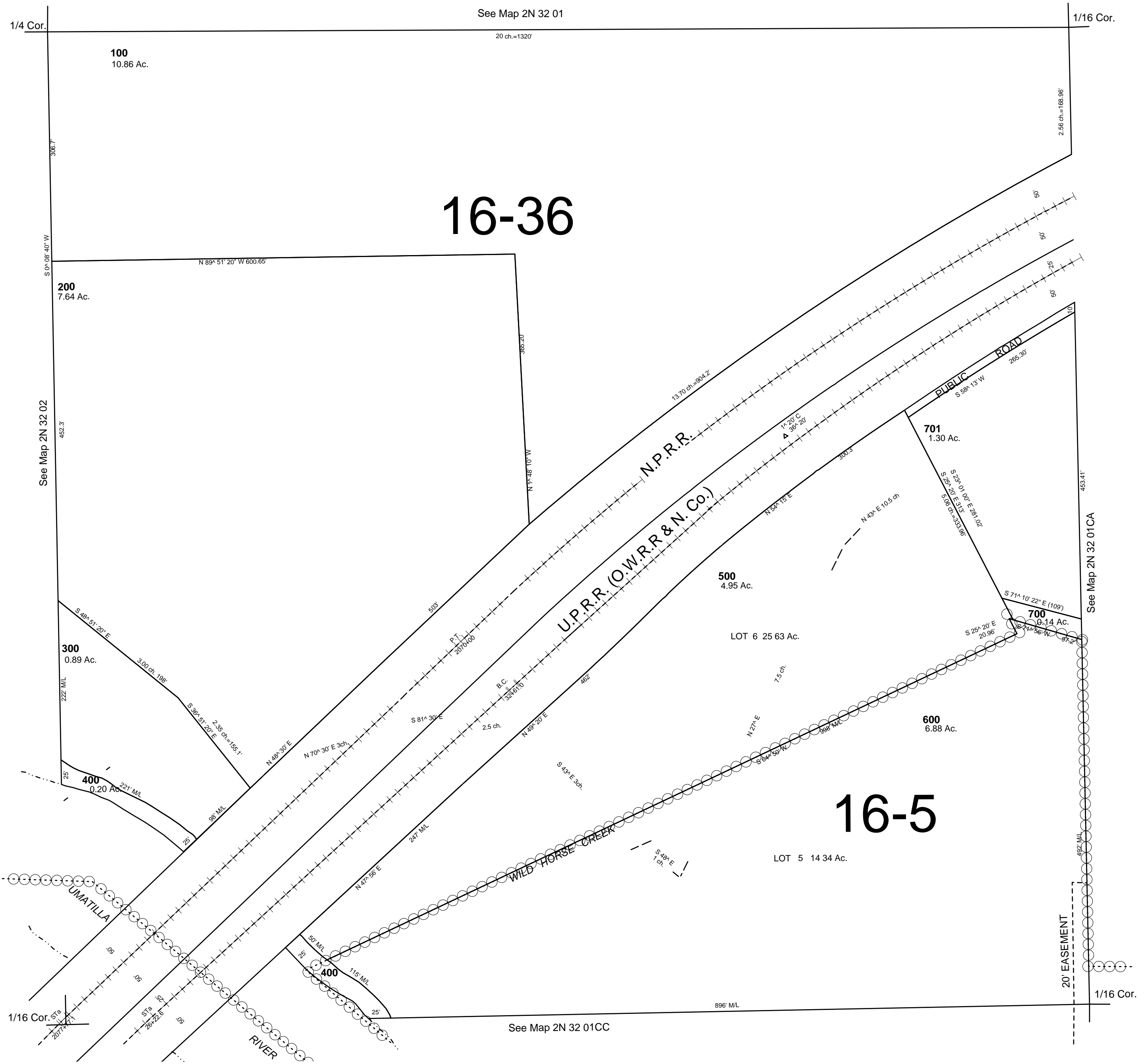


This map was prepared for Assessment & Taxation purposes only and was NOT prepared nor is it suitable for legal, engineering or surveying purposes.

NW1/4 SW1/4 SEC 1 T2N R32E WM UMATILLA COUNTY

2N 32 01CB
AERIAL PHOTO NO: 4P-101

1"=100'



Revised: 12/6/10

2N 32 01CB