

This map was prepared for assessment purposes

SEC 19 T1S R32E WM UMATILLA COUNTY

1/10/07

1S 32 19

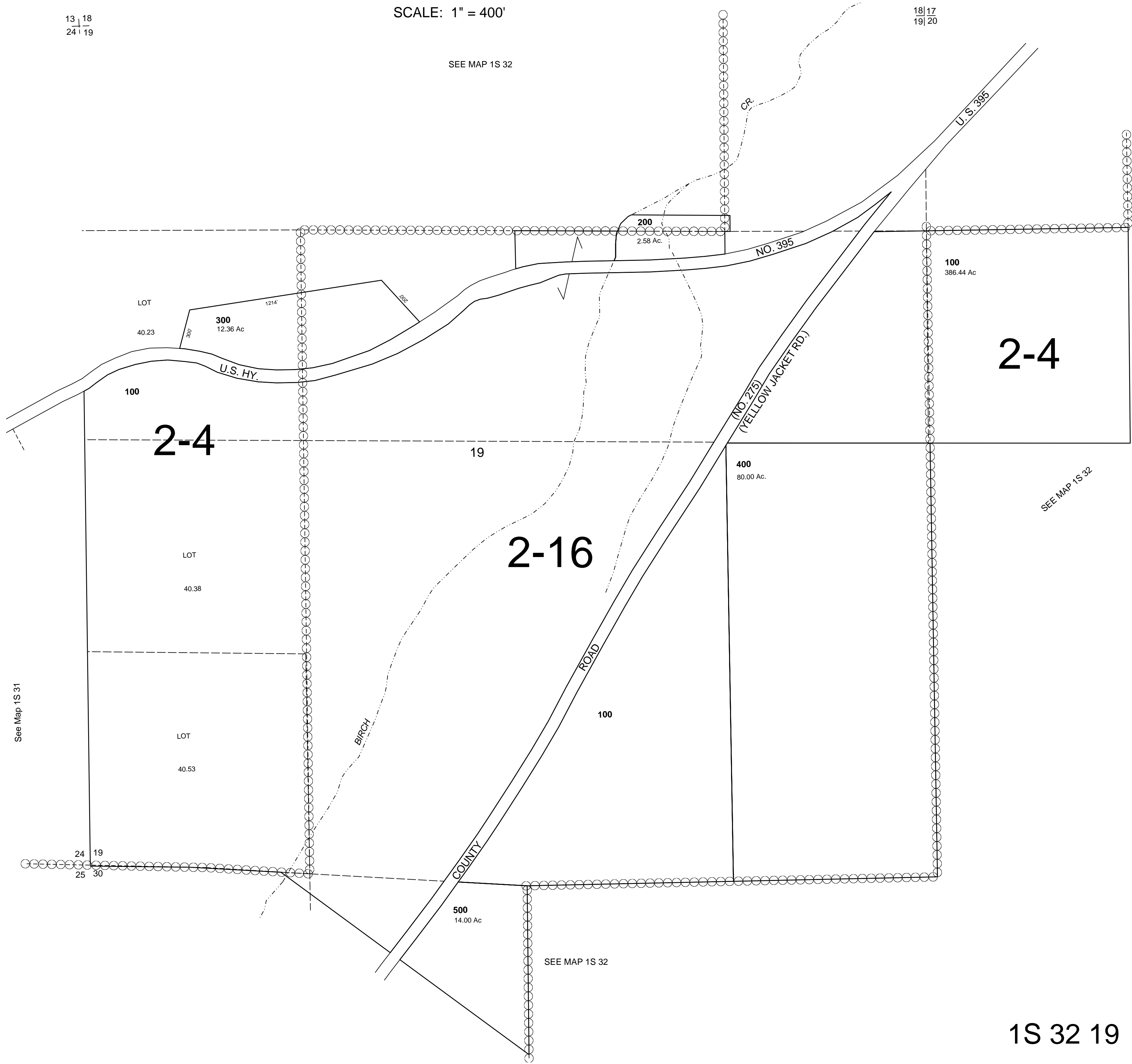
AERIAL PHOTO NO. 7P 23-29 & 106-112

SCALE: 1" = 400'

13 18
24 19

18 17
19 20

SEE MAP 1S 32



See Map 1S 31

SEE MAP 1S 32

SEE MAP 1S 32

1S 32 19