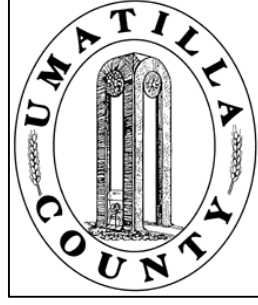


This map was prepared for Assessment purposes only.



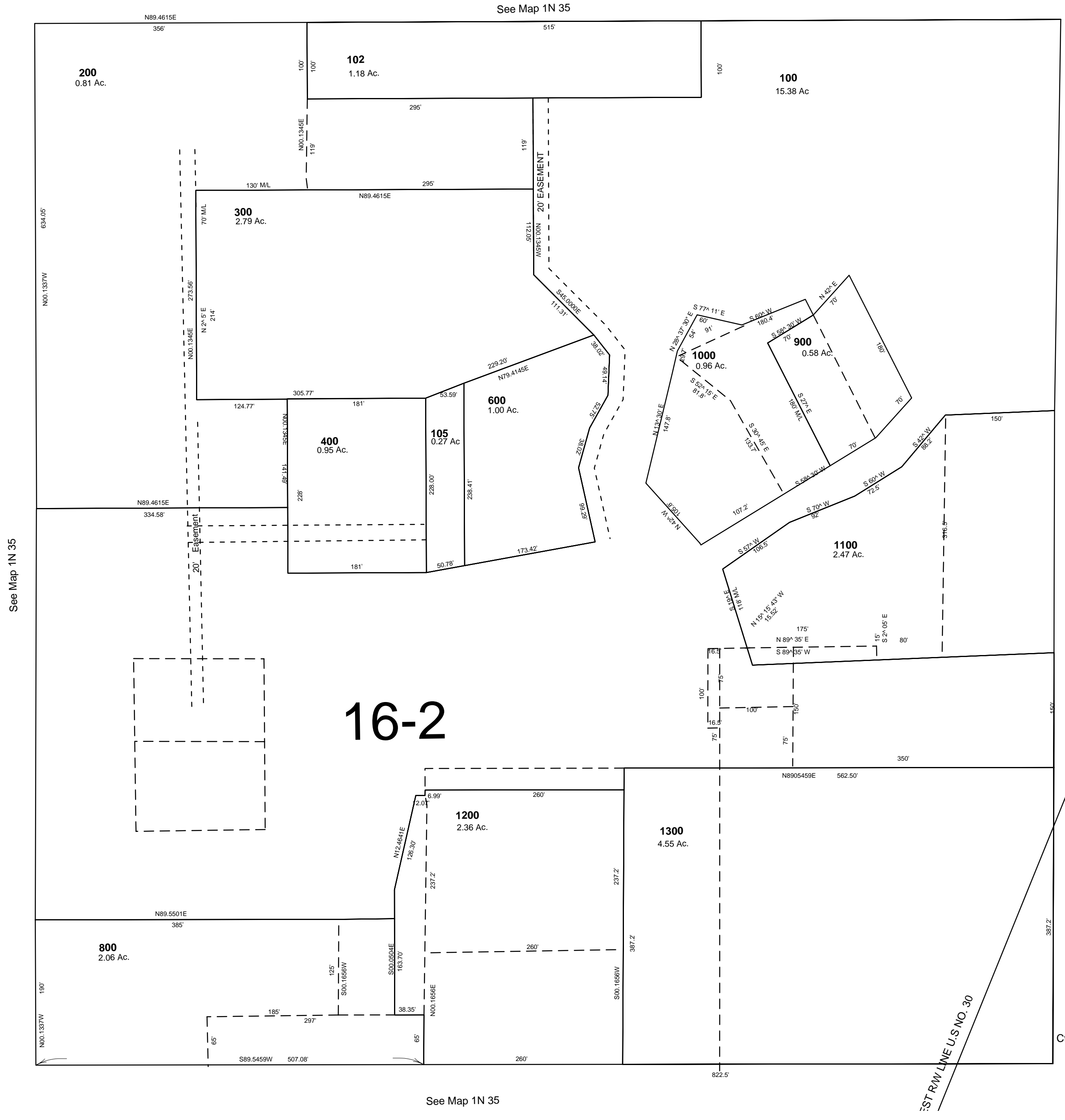
SE1/4 NW1/4 SEC 20 T 1N R 35 E WM UMATILLA COUNTY, OR

11/29/04

SCALE: 1" = 100'

1N 35 20BD

AERIAL PHOTO NO. 3P-166



CANCELLED
TL 700
104
103
500
101

16-2

1N 35 20BD